

COVERCLEAN™

Conveyor Belt Cleaning System

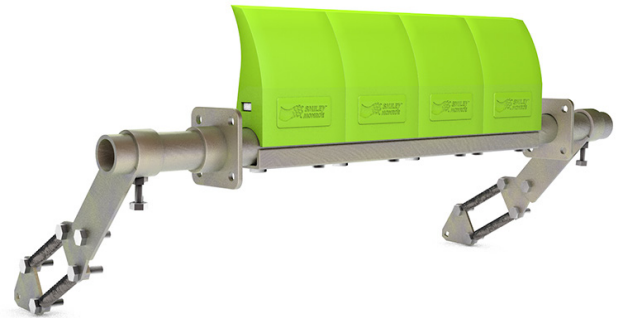
Many conveyor belt and vulcanised splice problems in bulk materials handling are caused by carryback material.

The installation of a reliable conveyor belt cleaner will help minimise many of these problems and keep costly housekeeping and downtime to a minimum.

Smiley Monroe's CoverClean™ conveyor belt cleaning system features primary and secondary cleaners with either polyurethane or tungsten carbide blades to ensure consistent cleaning efficiency and easy to fit replacement parts are all available from stock.

Our CoverClean™ range is designed with your sector in mind – whether you're an end user handling bulk materials or an OEM of materials processing equipment.

We are happy to make site assessment visits or work with you at design stage to make recommendations.



ADVANTAGES OF COVERCLEAN™

- ✓ Available in Polyurethane or Tungsten Carbide
- ✓ Simple Installation
- ✓ Consistent Cleaning Efficiency
- ✓ Long Service Life
- ✓ High Efficiency & Low Maintenance
- ✓ Replacement Parts available
- ✓ OEM Friendly



Head Office & Production Centre
Smiley Monroe Ltd
23 Ferguson Drive
Knockmore Hill Industrial Park
Lisburn, BT28 2EX
Northern Ireland, United Kingdom

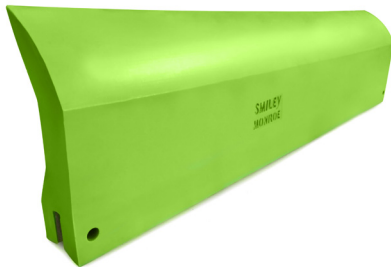
T. +44 (0) 28 9267 3777
E. sales@smileymonroe.com

**SMILEY[®]
MONROE**

CONVEYOR BELT EXPERTS

www.smileymonroe.com ISO 9001 OHSAS 18001

MONOBLADE - PRIMARY PU CLEANER



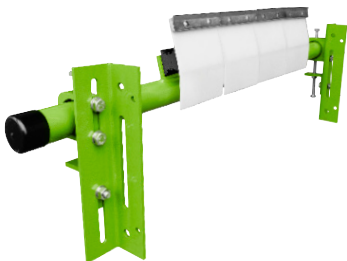
- ✓ **LONG SERVICE LIFE**
Heavy duty polyurethane PU blade designed to keep a cleaning edge as it wears
- ✓ **HIGH EFFICIENCY & LOW MAINTENANCE**
Simple spring tensioned single blade conforms to the belt head pulley for consistent cleaning efficiency
- ✓ **SIMPLE INSTALLATION**
Suitable for limited space applications & retrofitting
- ✓ **OEM FRIENDLY**
Ideal for the aftermarkets of mobile construction equipment manufacturers
- ✓ **REPLACEMENT PARTS**
Easy to fit quick release two-pin blade available from stock

MODULAR - PRIMARY PU CLEANER



- ✓ **LONG SERVICE LIFE**
Interchangeable blades designed to keep a cleaning edge as they wear
- ✓ **HIGH EFFICIENCY & LOW MAINTENANCE**
Simple spring tensioned segmented polyurethane (PU) blades conform to the belt head pulley for consistent cleaning efficiency
- ✓ **SIMPLE INSTALLATION**
Suitable for limited space applications & retrofitting
- ✓ **OEM FRIENDLY**
Ideal for the aftermarkets of mobile construction equipment manufacturers
- ✓ **REPLACEMENT PARTS**
All available from stock & easy to fit

ST - SECONDARY TUNGSTEN CLEANER



- ✓ **LONG SERVICE LIFE**
Thanks to German made tungsten carbide blade tips set at a non-aggressive 70° angle, mounted on rubber cushions
- ✓ **HIGH EFFICIENCY & LOW MAINTENANCE**
Segmented blades conform to the contour of the belt for consistent cleaning efficiency
- ✓ **SIMPLE INSTALLATION**
Suitable for limited space applications & retrofitting
- ✓ **REPLACEMENT PARTS**
All available from stock & easy to fit

STR - REVERSIBLE SECONDARY TUNGSTEN CLEANER



- ✓ **LONG SERVICE LIFE**
Thanks to German made tungsten carbide blade tips set at a 90° angle, mounted on rubber cushions
- ✓ **HIGH EFFICIENCY & LOW MAINTENANCE**
Segmented blades conform to the contour of the belt for consistent cleaning efficiency
- ✓ **SUITABLE FOR REVERSIBLE BELTS**
- ✓ **SIMPLE INSTALLATION**
Suitable for limited space applications & retrofitting
- ✓ **REPLACEMENT PARTS**
All available from stock & easy to fit