

# COVERCLEAN™

## Conveyor Belt Cleaning System

**Many conveyor belt and vulcanised splice problems in bulk materials handling are caused by carryback material.**

The installation of a reliable conveyor belt cleaner will help minimise many of these problems and keep costly housekeeping to a minimum and maximise uptime.

Smiley Monroe's CoverClean™ conveyor belt cleaning system features primary and secondary cleaners with either polyurethane (PU) or tungsten carbide blades to ensure consistent cleaning efficiency and easy-to-fit replacement parts are all available from stock.

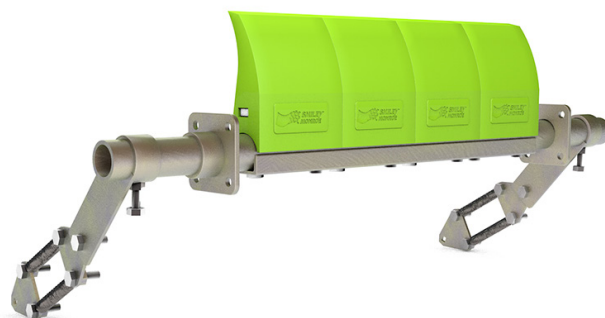
Our range is designed with your sector in mind – whether you're an end user handling bulk materials or an OEM of materials processing equipment.

### WHY COVERCLEAN™?

- ✓ Available with Polyurethane (PU) or Tungsten Carbide blades
- ✓ OEM friendly
- ✓ Simple installation
- ✓ Consistent cleaning efficiency
- ✓ Longer product life
- ✓ High efficiency & low maintenance
- ✓ Replacement parts available from stock



We're happy to make site assessment visits or work with you right from design stage to make recommendations.



V1 09/18

Head Office & Production Centre  
Smiley Monroe Ltd  
23 Ferguson Drive  
Knockmore Hill Industrial Park  
Lisburn, BT28 2EX  
Northern Ireland, United Kingdom

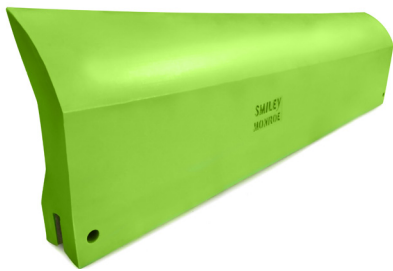
T. +44 (0) 28 9267 3777  
E. hello@smileymonroe.com



smileymonroe.com ISO 9001 OHSAS 18001

# COVERCLEAN™

## MONOBLADE - PRIMARY PU CLEANER



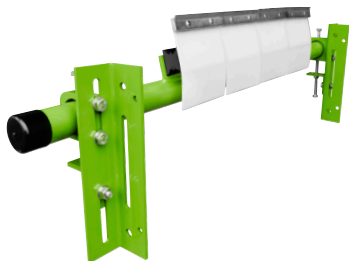
- ✓ **LONG SERVICE LIFE**  
Heavy duty polyurethane (PU) blade designed to keep a cleaning edge as it wears
- ✓ **HIGH EFFICIENCY & LOW MAINTENANCE**  
Simple spring tensioned single blade conforms to the belt head pulley for consistent cleaning efficiency
- ✓ **SIMPLE INSTALLATION**  
Suitable for limited space applications & retrofitting
- ✓ **OEM FRIENDLY**  
Ideal for the aftermarkets of mobile equipment manufacturers
- ✓ **REPLACEMENT PARTS**  
Easy-to-fit quick release 2 pin blade available from stock
- ✓ **HEAVY DUTY POWDER COATED TUBULAR STEEL POLES**  
Wall thickness - 5mm  
Outside diameter - 60.3mm  
Inside diameter - 50.3mm

## MODULAR - PRIMARY PU CLEANER



- ✓ **LONG LIFE**  
Interchangeable blades designed to keep a cleaning edge as they wear
- ✓ **HIGH EFFICIENCY & LOW MAINTENANCE**  
Simple spring tensioned segmented polyurethane (PU) blades conform to the belt head pulley for consistent cleaning efficiency
- ✓ **SIMPLE INSTALLATION**  
Suitable for limited space applications & retrofitting
- ✓ **OEM FRIENDLY**  
Ideal for the aftermarkets of mobile equipment manufacturers
- ✓ **REPLACEMENT PARTS**  
Available from stock & easy-to-fit
- ✓ **HEAVY DUTY ZINC COATED TUBULAR STEEL POLES**  
Wall thickness - 5mm  
Outside diameter - 48.3mm  
Inside diameter - 38.3mm

## ST - SECONDARY TUNGSTEN CLEANER



- ✓ **LONG LIFE**  
Thanks to German made tungsten carbide blade tips set at a non-aggressive 70° angle, mounted on rubber cushions
- ✓ **HIGH EFFICIENCY & LOW MAINTENANCE**  
Segmented blades conform to the contour of the belt for consistent cleaning efficiency
- ✓ **SIMPLE INSTALLATION**  
Suitable for limited space applications & retrofitting
- ✓ **REPLACEMENT PARTS**  
All available from stock & easy-to-fit

## STR - REVERSIBLE SECONDARY TUNGSTEN CLEANER



- ✓ **LONG PRODUCT LIFE**  
Thanks to German made tungsten carbide blade tips set at a 90° angle, mounted on rubber cushions
- ✓ **HIGH EFFICIENCY & LOW MAINTENANCE**  
Segmented blades conform to the contour of the belt for consistent cleaning efficiency
- ✓ **SUITABLE FOR REVERSIBLE BELTS**
- ✓ **SIMPLE INSTALLATION**  
Suitable for limited space applications & retrofitting
- ✓ **REPLACEMENT PARTS**  
Available from stock & easy-to-fit

Head Office & Production Centre  
Smiley Monroe Ltd  
23 Ferguson Drive  
Knockmore Hill Industrial Park  
Lisburn, BT28 2EX  
Northern Ireland, United Kingdom

T. +44 (0) 28 9267 3777  
E. hello@smileymonroe.com



smileymonroe.com ISO 9001 OHSAS 18001