

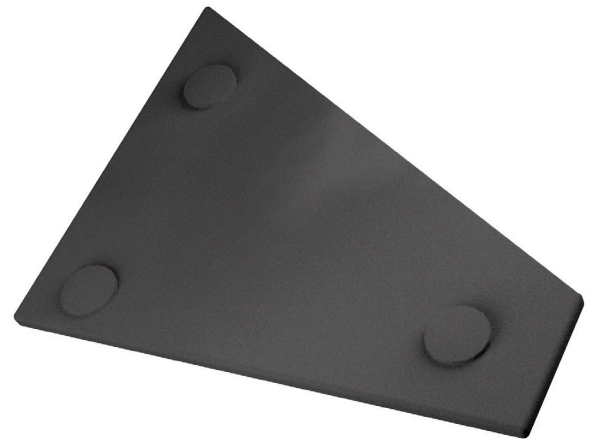
WEAR LINERS

Protecting Your Machines

Smiley Monroe's rubber Wear Liners offer materials processing equipment greater protection from impact loading and corrosion - reducing expensive refits and workplace noise pollution and maximising up time.

Hoppers and chutes benefit from being fitted with custom Wear Liners, which provide wear resistance - so that the liner is the sacrificial element, not the machine structure itself.

Our in-house design engineers and production team can manufacture Wear Liners for you, no matter how complex the shape of your machine's hopper or chute. Smiley Monroe Wear Liners are supplied ready to fit with pre-moulded holes and rubber bungs for ease of installation and product longevity.



WHY WEAR LINERS?

- ✓ Designed in-house to suit your specific application
- ✓ Protect hoppers and chutes
- ✓ Highly impact, cut and wear resistant rubber
- ✓ Significantly reduce workplace noise pollution
- ✓ Designed in-house to suit your specific application
- ✓ Complex shapes are custom cut by our automated CNC machines
- ✓ Hot vulcanised, steel backed rubber
- Available in various sizes and thicknesses up to 100mm (4")
- ✓ Can be branded
- ✓ Supplied ready-to-fit

INDUSTRIES

- Crushing & screening
- Demolition
- Environmental
- Quarrying
- Recycling
- Road Construction
- Bulk Material Handling
- Sand & Gravel

APPLICATIONS

- Hoppers
- Chutes
- Storage Tanks
- Cyclones
- Sand Washing Plant
- Barrel Liners

V1 09/18

Head Office & Production Centre
Smiley Monroe Ltd
23 Ferguson Drive
Knockmore Hill Industrial Park
Lisburn, BT28 2EX
Northern Ireland, United Kingdom

T. +44 (0) 28 9267 3777
E. hello@smileymonroe.com



smileymonroe.com ISO 9001 OHSAS 18001

CERAMIC LINERS

Maximum Wear Protection for Flow Surfaces

Smiley Monroe's Ceramic Liners offer systems the maximum protection from wear and corrosion as well as preventing blockages - reducing downtime and expensive refits.

Transfer chutes should be lined on flow surfaces with a material providing excellent abrasive wear resistance so that this liner, not the chute itself, is the sacrificial element. The type of liner material must be compatible with the bulk material being handled.

Depending on the cost of lining material, as well as ease of attaching to the chute walls, the selection is almost always some sort of compromise.

WHY CERAMIC LINERS?

- ✓ Considerably increased service life - maximum wear protection for handling industry's most abrasive materials
- ✓ Shock absorbing rubber - high impact resistance ensures the ceramic tiles do not crack and significantly reduces workplace noise pollution
- ✓ Rubber component is protected below the ceramic flow surface
- ✓ Flexible sheets ideal for curved surfaces
- ✓ Easy-to-fit
- ✓ Steel-backed rubber bonded ceramic panels can be made to suit customer's requirements

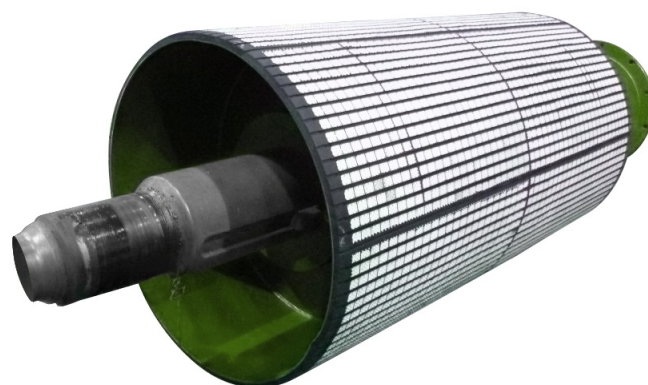
APPLICATIONS

- Iron Ore
- Coke
- Sinter

Steel-backed rubber bonded ceramic panel



Flexible ceramic rubber-backed sheet



SHEET SPECIFICATIONS

- Flexible ceramic rubber-backed sheets (500mm x 500mm), available in boxes of 4 sheets (1 square metre coverage)
- Available in 3mm or 4mm thick ceramic

PANEL SPECIFICATIONS

- Ceramic panel tiles available in 2 sizes:
25mm x 25mm x 10mm thick
100mm x 100mm x 20mm thick
- Panel size and shape can be made to suit customer's requirements

V1 09/18

Head Office & Production Centre
Smiley Monroe Ltd
23 Ferguson Drive
Knockmore Hill Industrial Park
Lisburn, BT28 2EX
Northern Ireland, United Kingdom

T. +44 (0) 28 9267 3777
E. hello@smileymonroe.com



smileymonroe.com ISO 9001 OHSAS 18001