



# ***CUT RUBBER & PLASTIC PARTS***



# ***CUT RUBBER & PLASTIC PARTS***

**SMILEY MONROE IS CONTINUOUSLY INVESTING IN THE LATEST AUTOMATED CUTTING TECHNOLOGY, CAPABLE OF PRECISION CUTTING AND DRILLING PROFILES, PATTERNS, HOLES AND SLOTS IN A VARIETY OF MATERIALS - FROM CORK TO RUBBER SHEETING AND CONVEYOR BELTING UP TO 20MM THICK.**

---

We produce value added ready-to-fit parts, such as conveyor skirting rubber, gaskets, seals and washers - for a wide range of applications, including conveyor and screen encapsulation, slurry tanks, and oil seals.

We are trusted as a sole supplier of Custom Cut Parts to global manufacturers of mobile materials processing equipment (OEMs).

## WHY CUSTOM CUT PARTS?



2D automated CNC cutting of rubber sheeting and conveyor belting up to 20mm thick



Our Custom Cut Parts are supplied ready-to-fit in kit form, improving production line efficiency



Polyurethane (PU) & Polyethylene (Pe) materials precision CNC cut in-house by waterjet



All parts are pen-marked as standard for easy identification and re-ordering



Implement design changes immediately

---



# ***APPLICATIONS***



Crushing, Screening & Recycling



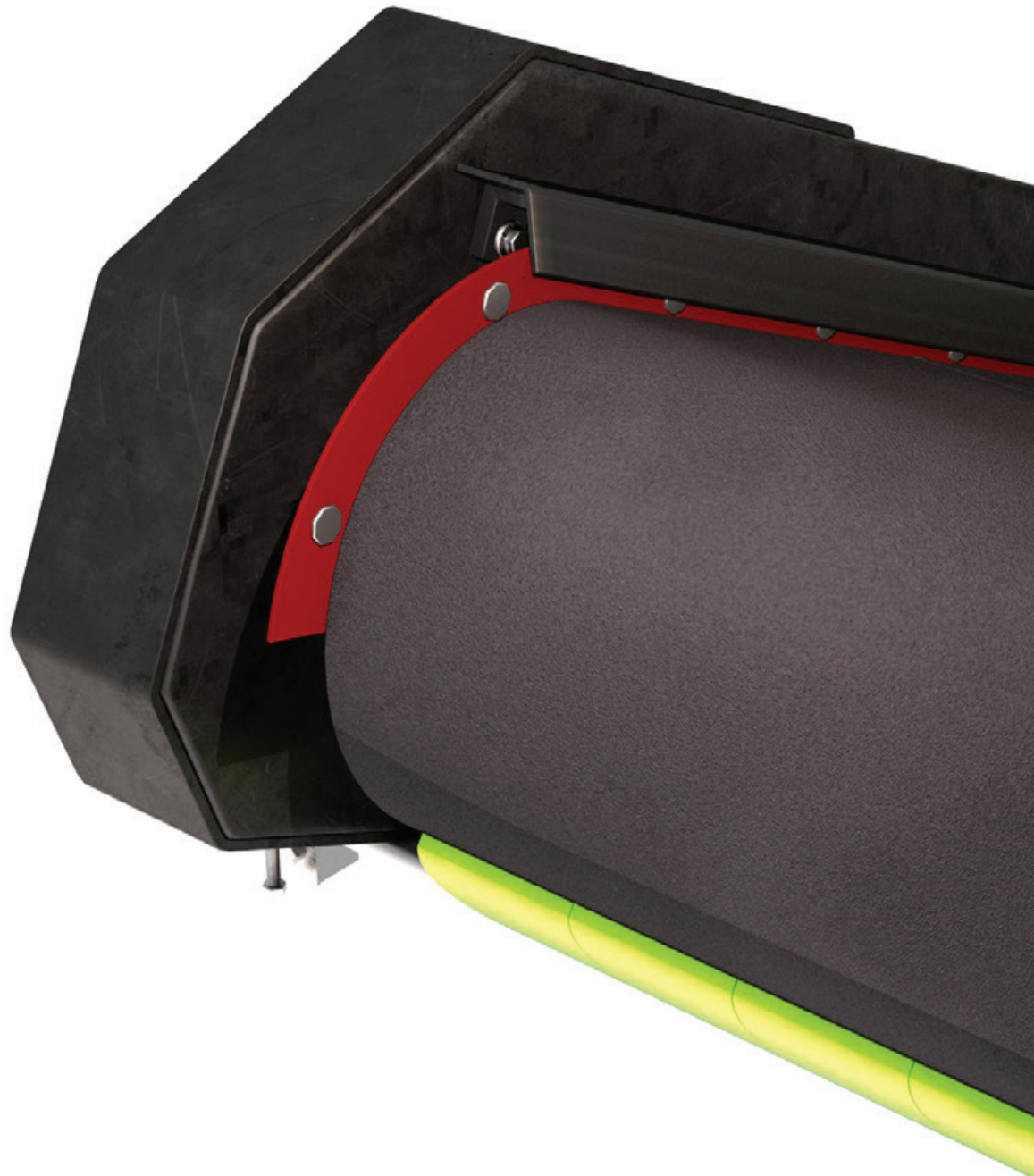
Agricultural



Washing & Environmental



Bulk material handling





#### **CONTACT US**

##### **GLOBAL HQ**

**Smiley Monroe Ltd**  
23 Ferguson Drive  
Knockmore Hill Industrial Park  
Lisburn  
BT28 2EX  
Northern Ireland  
United Kingdom

+44 (0) 28 9267 3777  
hello@smileymonroe.com  
**smileymonroe.com**

##### **OFFICE & PRODUCTION CENTRE US**

**Smiley Monroe Inc**  
205 North St  
Franklin  
KY 42134

+270 253 8001  
enquiries.us@smileymonroe.com  
**smileymonroe.com**

##### **OFFICE & PRODUCTION CENTRE INDIA**

**Smiley Monroe Rubber  
& Allied Products (India) Pvt Ltd**  
14/2C Begapalli Road  
Anumepalli  
Hosur  
Tamil Nadu - 635126  
India

+ 91 7397778189  
smindia@smileymonroe.com  
**smileymonroe.com**