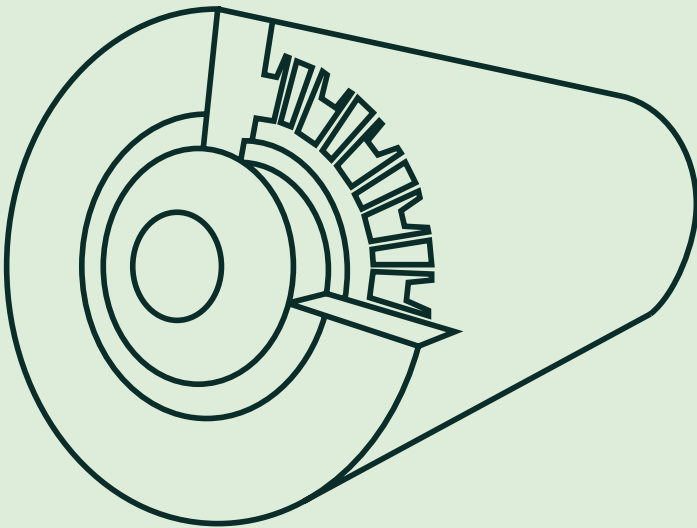




POLYMER ROLLERS



POLYMER ROLLERS

OUR NEW GENERATION OF HIGH DENSITY POLYETHYLENE (HDPE) ROLLER IS DESIGNED FOR THE TOUGHEST APPLICATIONS. DUE TO ITS STRENGTHENED FRAME CONSTRUCTION, ENERGY-SAVING POLYMER ROLLER IS A DIRECT REPLACEMENT FOR TRADITIONAL STEEL ROLLERS.

Energy-Saving Polymer Roller's self-cleaning surface greatly reduces the risk of buildup from carryback material - the main cause of belt tracking problems, material spillage, premature wear and failure of steel rollers.

In today's world of ever-rising energy costs, Energy-Saving Polymer Roller's lightweight yet robust design can help reduce belt tensions and power requirements - to keep your running costs down.

WHY POLYMER ROLLERS?



Patented roller design - tough, abrasion-resistant HDPE strengthened frame for heavy loads



Health & Safety - reduced risk of injury: lighter, safer and easier-to-fit & maintain (especially in difficult access and on long or suspended conveyors)



Self-cleaning (anti-static) surface - reduces buildup on roller face, for low maintenance & improve belt tracking



Overband Magnets - Energy-Saving Polymer Roller's polymer construction is unaffected by overband magnets



Damage free - no rusted or sharp rotating edges to cut your belt, especially during high-speed operation



Energy saving - up to 60% lighter than a steel roller, which means reduced belt tensions & up to 14% lower power consumption; silent running reduces noise pollution & HDPE roller tube can be recycled



Longer lifespan - less downtime: anti-corrosive HDPE & highly dust and waterproof triple labyrinth seal, means Energy-Saving Polymer Roller is ideal for use in dusty, humid, alkaline & acidic environments, as it won't rust and moisture cannot reach its bearings

THROUGH ROLLERS



- | | |
|--------------------------------------|--------------------|
| 1 HDPE ROLLER TUBE | 5 FEMALE LABYRINTH |
| 2 SHAFT (MILD STEEL/STAINLESS STEEL) | 6 LABYRINTH SEALS |
| 3 BEARING LOADING SET | 7 MALE LABYRINTH |
| 4 DOUBLE CAP BEARING | 8 SEALING RING |

Available in CEMA Series C,D,E in the following diameters (mm) and inches:

89	102	108	114	127	133	140	152	159	165
3.5"	4"			5"			6"		6.5"

BEARINGS

Various types of bearings available, including rust resistant NTN Type ZZ.

AVAILABLE BEARING SIZES (MM):

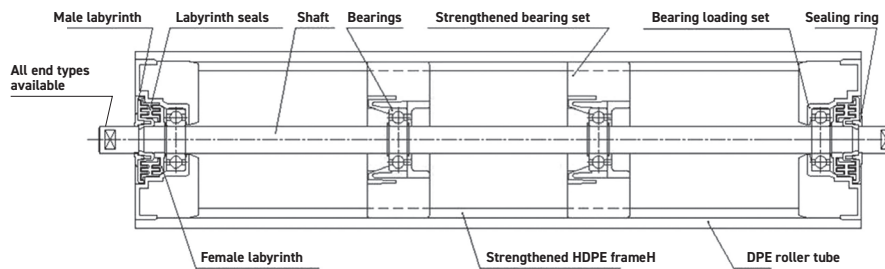
20	25	30	35	40
----	----	----	----	----

Bearing size selection dependent on roller diameter and roller length

RETURN ROLLERS

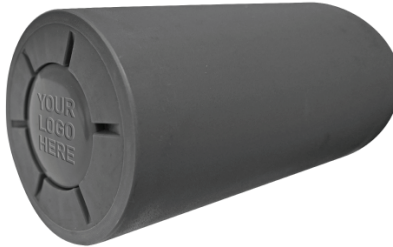
AVAILABLE IN CEMA SERIES C,D,E
IN THE FOLLOWING DIAMETERS (MM):

89	102	108	114	127	133	140	152	159	165
----	-----	-----	-----	-----	-----	-----	-----	-----	-----



END CAP OPTIONS

Your logo can be embossed on wing roller end caps -
minimum order applies.



APPLICATIONS



Mobile Plant OEMs



Telescopic Conveyors



Quarrying



Sugar Beet



Cement Works



Fertiliser/Potash



Ports



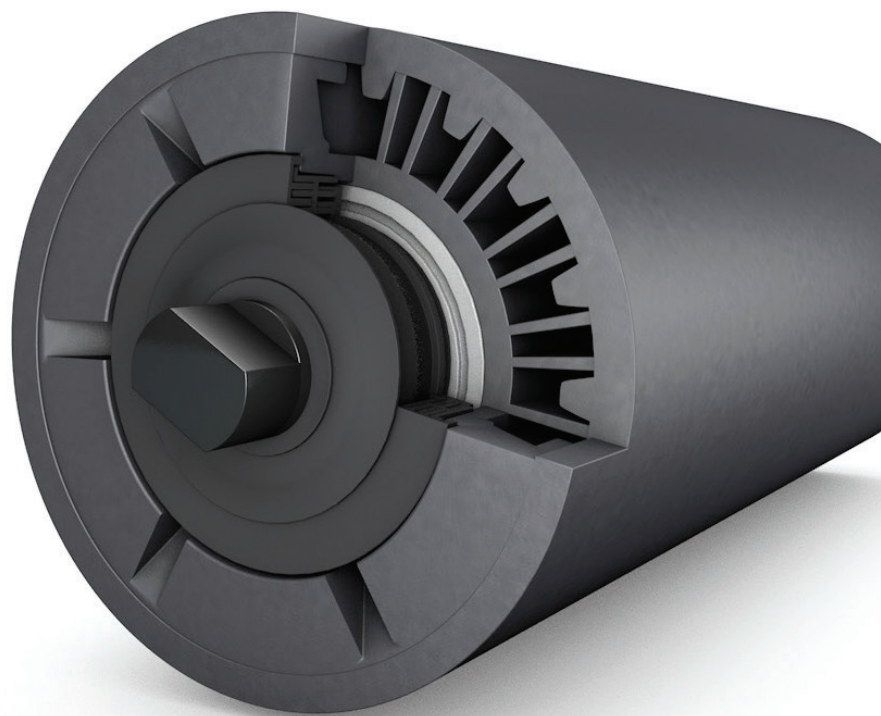
Coal Handling



Recycling



Salt Mining





CONTACT US

GLOBAL HQ

Smiley Monroe Ltd
23 Ferguson Drive
Knockmore Hill Industrial Park
Lisburn
BT28 2EX
Northern Ireland
United Kingdom

+44 (0) 28 9267 3777
hello@smileymonroe.com
smileymonroe.com

OFFICE & PRODUCTION CENTRE US

Smiley Monroe Inc
205 North St
Franklin
KY 42134

+270 253 8001
enquiries.us@smileymonroe.com
smileymonroe.com

OFFICE & PRODUCTION CENTRE INDIA

**Smiley Monroe Rubber
& Allied Products (India) Pvt Ltd**
14/2C Begapalli Road
Anumepalli
Hosur
Tamil Nadu - 635126
India

+ 91 7397778189
smindia@smileymonroe.com
smileymonroe.com